

RENSSELAER PANHELLENIC COUNCIL RECRUITMENT GUIDE



SCHEDULE OF ACTIVITIES

Wednesday August 24

8 am - 5 pm **Greek Life NRB Trip**
Grafton Lakes State Park

Wednesday August 31

6 - 9 pm **Meet the Greeks**
Student Union McNeil Room

Wednesday September 7

5 - 7 pm **Smoothie Social**
Behind Commons Dining Hall

Sunday September 11

7 pm **Sorority Information Meeting**
Student Union Mother's

Thursday September 15

5 - 9 pm **Rotational 1**
Alumni House

Friday September 16

5 - 9 pm **Rotational 2**
Alumni House

Saturday September 17

10 am - 2:30 pm **Invitationals**
Student Union

Sunday September 18

9 am - 1 pm **Preference**
Student Union

Time TBD **Bid Day**
'86 Field

Questions?

Vice President of Recruitment Katie Todd:
rpi.panhel.vpr@gmail.com

Assistant VP of Recruitment Rachel Blacker:
rpi.panhel.avpr@gmail.com



Welcome to RPI!

On behalf of our entire community of sorority women, I congratulate you on your acceptance and decision to attend RPI. I understand your commitment to academics has positioned you for success at this prestigious school and appreciate that you chose to diversify your college experience by exploring Greek Life. Your years here will include many exciting learning experiences but perhaps none as well-rounded and memorable as being a member of a Greek organization. The Greek community at RPI has enhanced the lives of thousands of students since 1825 and can add many valuable dimensions to your college experience. The Panhellenic Council on which I serve as President, and our 5 sororities on campus are eagerly awaiting your participation in what is sure to be a rewarding and unique experience.

Recruitment will allow you the opportunity to meet as many Greek women as possible and learn about each organization, Panhellenic, and the Greek community. In joining any sorority, you become part of the Panhellenic community, rather than a member of just one sorority. By considering Panhellenic

as a whole, you can look at all sororities with an open mind. Please do not rule out any sorority before Recruitment starts or before learning first-hand what each sorority has to offer. After all, every sorority shares common goals of sisterhood, and we are all part of Panhellenic.

Involvement in a sorority can be a positive contribution to your collegiate experience through friendship, leadership, academics, philanthropy, networking opportunities, and personal growth. No matter which sorority you choose, the Panhellenic friendships you form will be lifelong. Beginning with your first day as a new member, you will be part of a group of women with whom you can share your college experience. A sorority is much more than just an organization with meeting times - it is a group of women drawn together by mutual goals, trust, and respect. Once again, I am pleased you have chosen to explore the Greek Community and sorority life. I wish you the best in your future at RPI.

In Panhellenic spirit,

Samantha Bliss,
RPI Panhellenic Council President



THE PANHELLENIC COUNCIL

Every woman who joins a sorority becomes a member of Panhellenic. The Panhellenic Council is the governing body for all 5 sororities on the Rensselaer Polytechnic Institute campus and unites every sorority woman regardless of individual affiliation. Each sorority has a delegate on the Council. Together, the Council members strive to unite sorority women and strengthen their values through cooperation, common interests and talents brought from each chapter. The Council is led by seven executive board members who oversees all programs and activities. They work together with the delegates to make the Greek community a positive and active influence on the RPI campus and in the Troy community. The Panhellenic Council is responsible for promoting scholarship, philanthropy, personal growth, health, safety and involvement in sorority life and the Greek community as a whole.

Through committee work, Panhellenic provides activities and honors such as Panhellenic social events, philanthropy projects and scholarship awards. Panhellenic also sponsors programs in areas such as risk management, personal safety, leadership and new member education. The Council sponsors numerous service projects and contributes financially to campus and community organizations. Finally, the Council organizes and oversees Recruitment. Thus, you are able to experience what Panhellenic does first-hand.

Panhellenic Creed



We, as Undergraduate Members of women's fraternities, stand for good scholarship, for guarding of good health, for maintenance of fine standards, and for serving, to the best of our ability, our college community. Cooperation for furthering fraternity life, in harmony with its best possibilities, is the ideal that shall guide our fraternity activities.

We, as Fraternity Women, stand for service through the development of character, inspired by the close contact and deep friendship of individual fraternity and Panhellenic life. The opportunity for wide and wise human service, through mutual respect and helpfulness, is the tenet by which we strive to live.

The Greek Dictionary & Terms

Α Β Γ Δ Ε Ζ Η Θ Ι Κ Λ Μ Ν Ξ Ο Π Ρ Σ Τ Υ Φ Χ Ψ Ω

Alpha | Beta | Gamma | Delta | Epsilon | Zeta | Eta | Theta | Iota | Kappa | Lambda | Mu | Nu | Xi |
Omicron | Pi | Rho | Sigma | Tau | Upsilon | Phi | Chi | Psi | Omega

Active: A sorority women who has been formally initiated by her chapter.

Alumna: An initiated sorority member who is no longer in college.

Bid: A formal invitation to join a sorority or fraternity issues by the Panhellenic Council or by an individual sorority or fraternity.

Chapter: A local group of a national organization, designated by its own Greek Letter name.

Continuous Open Bidding: An opportunity for chapters who are not at total to extend bids to women who did not join a sorority during Formal Recruitment.

Fraternity: The name that applies to all Greek letter organizations and is characterized by a ritual, pin and strong bond of sisterhood.

Greek: A member of a sorority or fraternity.

Interfraternity Council (IFC): An umbrella organization that presides over 29 men's fraternities, each of which is autonomous as a social, Greek letter society of college men, undergraduate and alumni.

Initiation: The formal ceremony which brings new members into full membership of a sorority or fraternity.

Lavaliere: A necklace with Greek letters attached to it. Sorority members usually receive their sorority's lavalliere at the time of joining or after initiation.

Legacy: A PNM whose sister, mother, or grandmother is an alumna or active member of a particular sorority. A sorority is not obligated to pledge its legacies.

Membership Recruitment Acceptance Binding Agreement (MRABA): Also known as a Preference Card, each PNM completes an

MRABA after Preference Round to state her membership preferences. The PNM ranks the sororities she has visited during preference round and signs it to state she will accept a bid from any sorority she lists. This is a binding agreement.

New Member: One who has been accepted as a member of a sorority or fraternity. After a period of education about the sorority/fraternity, she/he may be initiated.

New Member Educator: The individual who is the liaison between the new members and the chapter. This individual is responsible for implementing and monitoring the new member program and preparing the new members for initiation.

National Panhellenic Conference (NPC): A conference body composed of all 5 members of women's fraternities, each of which is autonomous as a social, Greek letter society of college women, undergraduate and alumnae.

Panhellenic Council: The governing body of the 5 women's fraternities on the RPI campus.

Potential New Member (PNM): A women who is participating in the Recruitment process and wishes to explore the possibilities of sorority membership.

Recruitment: A function whereby undergraduates interested in a sorority or fraternity meet with the members, learn more about the organization and join a organization.

Recruitment Counselor (Rho Chi): A sorority member who has disaffiliated during Recruitment to assist Potential New Members.

Suicide Bidding: When a PNM attends more than one Preference Round event but only lists one choice on her MRABA. This is strongly discouraged as your chances of joining are severely limited. See MRABA section on page 13 for more information.



Academics

Academic achievement is the first and foremost priority of all sororities. Every sorority places strong emphasis on creating an atmosphere conducive to high academic performance as well as challenging each member to live up to her highest academic potential.

Each sorority implements various programs designed to assist members in their academic pursuits. Programs range from tutoring and study hours in the house to educational programs, awards and incentives. Additionally, most organizations provide financial scholarships for members, often supported by their national organizations and local alumnae groups. The Panhellenic Council sponsors programs throughout the year designed to help chapters focus on methods of scholastic improvement and annually awards several scholarships to recognize academic accomplishments. These efforts reinforce the belief that academic achievement is an integral part of the Greek experience. Sorority women consistently achieve a higher grade point average than non-Greek undergraduate women. This statistic indicates the positive effect sororities have on women's academic achievement.

Panhellenic Average GPA's

Spring 2015:	3.17
Fall 2015:	3.14

Leadership

The RPI Greek community is dedicated to building future leaders by providing a wealth of leadership opportunities. From academia to business to philanthropy, the leaders of today are gaining their leadership edge from their fraternal experiences.

Membership in a Greek organization is one of the most effective ways to discover and refine your leadership potential. Within each chapter, members have the chance to assume many different leadership roles. These roles range from serving as Recruitment Chair to Treasurer to Social Chair or even President. Within each organization, anywhere from 5 to 25 different leadership positions exist, all requiring different degrees of skill and commitment.

Opportunities to learn and practice leadership stretch beyond chapters as there are leadership roles open on the Panhellenic Council and other organizations. Leadership is also gained by participating in educational programs and leadership workshops. Each national organization also sponsors leadership development programs which may include officer training programs and regional conferences.

Beyond the Greek community, sorority women are involved in nearly all student organizations at RPI and can be found in leadership positions in many organizations such as RPI Athletics, Student Government, Phalanx Honor Society, Student Orientation, just to name a few.



Philanthropy

All Greek organizations at Rensselaer Polytechnic Institute are involved with specific philanthropies and service projects. Each of our 5 sororities volunteers their time and contributes financially to help those in need.

Sororities host a variety of fundraisers throughout the year such as soccer tournaments, barbecues, pageants, galas, bake sales and many other events. The money raised goes directly to the sorority's philanthropy.

Chapters also donate their time outside of their own philanthropic events. Members participate in a variety of University-wide and community-based organizations such as the Mount Ida Food Pantry, Boys and Girls Club and Carroll Hill Elementary School. Sorority women volunteer their time in countless ways to help others, contributing approximately 2,100 hours of service in the Spring 2016 semester alone.

Sorority women actively participate in University-wide Relay for Life to benefit the American Cancer Society. Panhellenic had full sorority participation and helped Relay for Life raise over \$6,971.84 for this worthy cause. Sorority members provide staffing and coordinating donations that serves students, faculty and staff in need. Greeks feel it is important to focus on aspects of life that can be improved, and serving others is a small way to help

Activities

One advantage of Greek Life is the wide range of activities available to you. Being in a sorority does not restrict you from becoming involved in the rest of campus life. You will have time to be involved with your sorority, other organizations and keep up your grades with a little time management.

All sororities encourage members to be involved in activities outside the sorority. Through participation in various activities, a sorority can help develop the talents of its members. RPI offers a variety of athletic events in which all chapters may participate. In addition to organized intramural sports such as flag football, basketball, tennis, soccer and softball, there are a number of club teams in which women can participate. RPI athletes and band members are also members of sororities. Volleyball and soccer players, cheerleaders, ROTC members and runners are all supported by their sorority sisters.

Greek students are involved in the more than 200 student organizations on campus as well as many organizations in the Troy community. Many Greeks hold leadership positions within these organizations, ranging from the Student Government Association to the Habitat for Humanity. Greeks can be found in the Phalanx Honor Society, as Orientation Leaders and volunteering for Relay for Life. They are active in honor societies and advocacy groups.

Greeks are definitely an active force on campus and in the community. A sorority can open many doors to activities you may not otherwise experience and introduce you to people you might not otherwise meet.

Sisterhood

Although each sorority is unique and has its own special characteristics, there is a common thread that unites us all - sisterhood, a special bond experienced among the members of a sorority.

Throughout your days at RPI, no matter how situations change or how many friends come and go, sisterhood is the steady acceptance that remains. Apart, we are different people with very much to offer, and when we are together, we are a family that shares a unique bond.

Sisterhood entails a respect for others and under no circumstance will individual chapters, the Panhellenic Council, the Greek community or RPI tolerate any sort of hazing activity. Hazing is any intentional, negligent or reckless action, activity or situation which causes another pain, embarrassment or harassment, regardless of the willingness of the participant.

Sororities were founded by women who came together as friends to create a sisterhood and to support each other. Their goals are intellectual, social and moral development. Sororities at RPI expect their members to strive for academic achievement, demonstrate responsible citizenship, show concern for the rights and needs of others and provide leadership by promoting self respect.

All chapters work to educate and foster a strong commitment to a fair and respectful environment for living, work, and study. Hazing has no place in sorority life and is completely contrary to the original ideals of a women's fraternal organization.



Socials

In addition to academic and leadership opportunities, sororities also provide social programs and activities for their members. Social activities include events such as formals, date nights, Homecoming, and Family Weekends.

The primary goal of every chapter is to bring together a group of women and enhance their values, traditions and honor while building lasting bonds of friendship. Diversified social programs allow students the opportunity to develop meaningful friendships within chapters, the Greek community and the RPI campus as a whole.

For years, Greeks across the country have had to deal with an image of reckless partying and irresponsible behavior. At RPI, each chapter maintains a responsible social policy to promote enjoyable social activities in a safe environment. Alcohol is not permitted in any chapter house. The Institute also has a closed party policy that opposes the misuse of alcohol and maintains that all chapters, individual members and guests must abide by state and local laws and university regulations.

All chapters work to foster a better understanding of social responsibility and alcohol education for their members. Panhellenic is committed to helping its organizations maintain balanced social programs which contribute to personal development and do not detract from the Institute's educational mission.

The purpose of a social life is to create a stimulating environment in which you develop into a mature and responsible individual. The social opportunities are varied and endless. There is always something to do when you are part of Greek Life at RPI.



"We give up our letters

Recruitment Counselors

Recruitment is exciting and memorable but can also be hectic and emotional. From the start of Recruitment, you will be assigned a Rho Chi (also known as a Recruitment Counselor) along with 17 to 20 other Potential New Members. Your Rho Chi is prepared to help you in any way and can answer any questions you may have. Although she is a member of a sorority, she is representing the Panhellenic Council during Recruitment week.

Each Rho Chi has promised not to reveal her sorority affiliation in order to give unbiased advice and reduce the pressure you might feel if you knew with which sorority she is affiliated. Although it is sometimes tempting to know which sorority your Rho Chi is a member of, please do not ask her to tell you or make extreme efforts to find out her affiliation. Also, if you know which sorority a Rho Chi is a member of, do not reveal her affiliation to anyone else. All of the Rho Chis will reveal their sorority affiliations on Bid Day.

Your Rho Chi went through an extensive training program to qualify her for this position. Through her training, she gained a thorough knowledge of the Recruitment process. She has participated in Recruitment both as a Potential New Member and on the other side as a sorority member, so she is familiar with all aspects of Recruitment. Most importantly, she is an impartial listener. She will be your friend who will share in your joys and anxieties and is always willing to talk about what you are feeling and experiencing.

Your Rho Chi can help you make your Recruitment experience even more exciting and enjoyable. Never hesitate to ask her anything. She is a vital link between you and the Greek community, so get to know her!

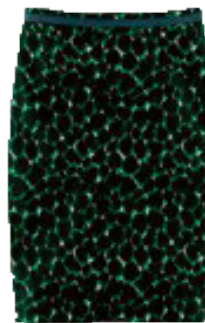
to help you find yours"

WHAT TO EXPECT & WEAR

Rotational 1
Rotational 2

Rotational 1 and 2

During rotationals, you will visit all 5 sororities for 20 minutes each. These events are intended to introduce you to every chapter before you begin to make any decisions. You should attend both dates of rotationals. Wear "dressy casual" clothes. You will be standing a lot so sandals, flats and other comfortable shoes are recommended (heels are discouraged). Ensure that your clothing is not too revealing or short. The most important thing is to make sure you feel comfortable and confident.



WHAT TO EXPECT & WEAR

Invitationals

House tours / invitationals is an exciting day. Each event is 45 minutes and you can be invited back to up to three houses. All of our sororities live in beautiful homes, and during this round they will show you around their house. They will want to get to know you on a more personal basis and during this round, you should begin to be able to recognize the character and spirit of each sorority. Pay attention to your feelings and consider whether you feel comfortable at each house and if you were excited to return. You should wear business casual clothes.



Bid Day

The conclusion of Recruitment is Bid Day! You may receive an invitation to join or you may be notified by Panhellenic that your bid has not been matched. If your bid has not been matched, you will be eligible for snap bidding. If you receive an invitation to join, your bid card will list the sorority that has selected you.

At your sorority house, you will be met by your new sisters. Bid Day is a time for fun, pictures, entertainment and new friends. You will meet and become better acquainted with the other new members and older sorority sisters. This day is the exciting end of Recruitment and the beginning of the development of your new "home away from home". Your new friends will last throughout your college career and the years after. Sisterhood extends beyond your college years to anywhere you may go as an alumna.

Preference

Preference allows you to really develop deep bonds with a sorority and ask any pressing questions before you make your final decision. You may attend up to two preference events, each an hour long. Remember that the sororities would not have invited you to Prefs if they did not enjoy your company. At each event, think carefully about how comfortable you feel at each house and take time to look around you, as the women at these events could become your sisters. What qualities do you share with these women? Do you feel comfortable with them? This round is meant to help you make your final decision. You should wear business casual clothes.

Each sorority will present a ceremony, which usually consists of singers and speakers. The members will tell you what it means to be a sister and what their sorority has to offer. When making your decision, think back to previous rounds of Recruitment and recall what you liked best about each group. Consider why you would like to be a member of that organization and how comfortable you felt at the house each day. It can sometimes be difficult to choose between sororities, but remember that there is not necessarily one "right" choice, and a group that you may not have strongly considered earlier may be the perfect place for you.



PNM Code of Ethics

Being a part of the Rensselaer Polytechnic Institute's sorority recruitment is not only a great opportunity but a great privilege. Each of the sororities on campus has worked hard for the past year in preparation for your visit to their home. As a guest, you are expected to act in accordance to the following rules, which apply to both the active sorority members as well as recruitment counselors. Failure to do so may result in your removal from the recruitment process.

I will attend all events to which I receive an invitation.

I will behave respectfully towards myself, other potential new members, chapter members, recruitment counselors, and university staff at all times.

I will act respectfully and politely when attending all events.

I will not discuss my opinion of any sorority participating in recruitment with other potential new members.

I will not discuss or reveal a known affiliation of any recruitment counselors with other potential new members.

I understand that if I am matched with a sorority and receive a bid, I am bound to that group and am therefore considered ineligible for an invitation for membership from any other sorority until the next formal recruitment.

PNM Bill of Rights

- The right to be treated as an individual
- The right to be fully informed about the Recruitment process
- The right to ask questions and receive true and objects answers from Recruitment Counselors and sorority members
 - The right to be treated with respect
- The right to be treated as a capable and mature person and not to be patronized
 - The right to ask how and why and receive straight answers
 - The right to have and express opinions to Recruitment Counselors
- The right to have inviolable confidentiality when sharing information with Recruitment Counselors
 - The right to make informed choices without undue pressure from others
 - The right to be fully informed about the binding agreements implicit in MRABA signing
- The right to make one's own choice and decision and accept full responsibility for the results of that decision
- The right to have a positive, safe and enriching Recruitment and membership experience

MRABA

The preferential bidding system is a method in which Potential New Members' preferences are matched to sororities' preference lists. Following your last Preferential Round event, you will meet with your Rho Chi to sign a Membership Recruitment Acceptance Binding Agreement (MRABA). You must maintain complete silence between each Preferential Round event from the time you leave your last house until you sign your MRABA. You may ask a Rho Chi for assistance. However, remember the silence period is important to ensure that your decision is yours and yours alone.



On your MRABA you will be asked to list, in order of preference, the sorority(ies) you wish to join and you will sign your MRABA with the understanding that you are willing to accept a bid from the group(s) listed. If a bid is extended to you from one of your choices and you decide not to accept it, you will not be eligible to participate in Continuous Open Bidding and or Recruitment for one year. Remember that the decision you indicate on your MRABA is binding for one year. If you attend more than one Preferential Round event, your Rho Chi will encourage you to list more than one sorority on your MRABA because you maximize your opportunity to receive a bid if you list more than one option. Once you have signed and turned in your MRABA, it cannot be changed under any circumstances. You should also not reveal to anyone what choices you made because there is no guarantee of which group you will match. If there is ever any problem with your MRABA, only a Rho Chi will contact you about it.

Financial Obligations



An important consideration in deciding to join a sorority should be if you are able to meet the financial requirements of membership. Membership is most expensive the first semester you join due to many one-time fees. However, all sororities are willing to work with each member individually through payment plans to meet the financial obligations of membership.

Sororities often require members to live in the sorority house for at least one year, usually during the second year of membership. Living in the sorority house is an exceptional value, as the average cost of living in the house (including room, board and dues) can be less than living in RPI residence halls!

There are also many "extras" such as t-shirts from events, which are in no way mandatory. T-shirts cost from \$12 to \$20.

If you have questions regarding the cost of belonging to a sorority, please ask your Rho Chi or sorority members about their costs.

New Member Obligations

Once you make the decision to join a sorority, you will begin one of the most exciting times of your college career. You are probably wondering what your role as a new member will be and what you can expect to gain from sorority membership. You will enter a new circle of friends and can expect to find your home away from home. You can also expect to be treated with respect. Sororities at RPI do not condone or participate in any activities which can be classified as hazing.



Each sorority has an organized program designed for its new members. Once a week you will attend a meeting with the new member educator. She is a sister who has been elected to direct the new member program. At these meetings you will study the history, purpose, structure and standards of your sorority. This education period will give you an appreciation and understanding of what awaits you as an initiated member.

In a sorority, you will find an atmosphere where academic endeavors are encouraged and honored. You will be expected to work up to your potential and attend all of your classes. Some sororities may require you to attend a study hall at the house. Every sorority stresses academics and will have programs set up to assist you.

Activities are also held to build relations between the new members and the sisters. Each new member has a big sister who is there to help and offer the benefit of her experience in the chapter. Additionally, sisterhood events such as movie nights and study breaks are planned to bring the new members and sisters closer together.

It is important not only to be involved in the sorority, but in other activities. Greeks have a reputation for being active in and holding leadership positions in many organizations. Because they realize the benefits and rewards of campus involvement, sororities may require members to be involved in one or more activities outside the sorority. This can help you learn to budget your time.

The value of your experience will depend largely upon what you make of it. Remember that the sorority chose you not only on the basis of your past achievements, but for the contributions you will make as a future sister. You will be expected to attend sorority functions and contribute your time to making your chapter a success. You will represent your sorority to others and will be expected to maintain the high standards your sorority has established. Sorority membership can be one of the most rewarding experiences of your college career. Make the most of it!



Panhellenic Recruitment Rules

1. A woman must be enrolled at the Rensselaer Polytechnic Institute as a student to participate in Recruitment and belong to a sorority.
2. Potential New Members and sorority women are not permitted to discuss or mention any other sorority or fraternity in a negative or degrading manner at any time. Sororities are not to mention or make inference to other sororities and/or fraternities in songs, skits, slide shows or other types of entertainment.
3. Sorority women and Potential New Members may not arrange or go on dates or double dates together until the conclusion of Formal Recruitment.
4. Potential New Members may not contact, in any manner, a sorority member until bids are extended. Contact includes visiting, phoning, sending letters, notes, flowers, balloons, etc. Contact the VP Recruitment with extenuating circumstances.
5. Any Greek woman, including members and alumnae, may not contact or visit a Potential New Member in her place of residence during the Formal Recruitment program. This includes residence halls, apartments or any other type of lodging.
6. Greek women may not tell Potential New Members to which sorority Rho Chi belong.
7. Potential New Members may not tell other people to which sorority Rho Chi belong.
8. Potential New Members must attend all rotational events. For subsequent rounds, Potential New Members must accept invitations to the maximum number of events they can. A Potential New Member not attending an event she accepted an invitation for may be dismissed from the Recruitment program.
9. Sorority women, alumnae or anyone acting as a representative of a sorority should not tell a Potential New Member or imply that she has a bid, ask her to join or imply an invitation from a group at any time. Any type of statement, written or oral, that would lead a Potential New Member to believe that she was automatically assured a bid or invitation from a sorority is prohibited. Sorority women are not permitted to say anything regarding a Potential New Member's return to their house at any time during the Recruitment process. A bid, written or oral, is defined as a sorority member saying that she or her particular chapter is interested in pledging a particular woman. A bid also infers or implies future connections with the sorority including future meetings during Formal Recruitment. Conversation during the Preferential Round should not in any way indicate that a Potential New Member will be a part of that particular group, will be guaranteed a place or will be returning for Bid Day.
10. A Potential New Member must consult with her Rho Chi before withdrawing from the Recruitment program.
11. Any Potential New Member signing a Membership Recruitment Acceptance Binding Agreement and receiving a bid at the end of Formal Recruitment is bound by the agreement for one calendar year if she is at the same university or college.
12. Potential New Members found in violation of any of the Recruitment Rules will be subject to dismissal from the Recruitment program.

All Recruitment Rules have been established to help sorority women and Potential New Members uphold the Recruitment system. The Formal Recruitment period has a twofold purpose: to give the Potential New Member every opportunity to become acquainted with as many sororities as possible so that she may make a wise, unbiased decision concerning membership and to ensure that sororities have equal opportunities in recruiting and membership selection under the Panhellenic System.

All sorority members and Potential New Members will be expected to conform to the highest standards of conduct. Mentioning subjects such as sorority reputations, stereotypes or generalizations, Potential New Member reputations or promising bids for membership violates the spirit of the Panhellenic System. Formal Recruitment begins September 15, 2016 and ends at the conclusion of Bid Day on September 18, 2016.

HELPFUL HINTS

If I participate in Recruitment, am I obligated to join a sorority?

No, many women choose to go through Recruitment to meet people and make new friends. Recruitment is an opportunity for you to visit the sororities, get a glimpse of Greek life, and assess whether or not you would like to be a part of the RPI Greek community

What if I only want to be in a certain sorority?

Potential New Members often experience the greatest disappointment by beginning the Recruitment process only wanting to be in one or a few certain sororities. Sorority membership is more than wearing certain Greek letters. It is giving your time and energy to the sorority, agreeing to abide by all the rules and regulations, and living up to high expectations. Don't make a decision based on stereotypes and others' opinions. Keep an open mind and make a decision that is right for you.

I have heard that sororities have various reputations. How do I handle this information?

The only opinion of a chapter that should matter is yours. Each chapter is different from campus to campus and from year to year. If you allow someone else's perceptions to influence you, then you may not feel satisfied with your choices during Recruitment. Remember that each chapter is made up of many different women with different talents and qualities that compose the entire group. There are always rumors about any important event and Recruitment is no exception. If you hear derogatory remarks about any sorority or any women in the group, please disregard those comments as inappropriate and against the Panhellenic spirit. Any questions regarding rumors or inappropriate comments should be directed to your Rho Chi. It is very important to keep an open mind about each sorority throughout the process and not to dismiss a certain house based on rumor or stereotype.

What do sororities look for in members?

It is difficult to pin-point exactly for what sorority women are looking. There are as many answers to that question as there are sorority women. A strong academic background is very important to every sorority. Each sorority has a minimum grade requirement and no matter how wonderful the Potential New Member may be, the sorority might release her if she cannot meet the grade requirement.

Often, women have friends currently in sororities or are legacies to certain sororities. Some women feel that these Potential New Members have an advantage in that sorority. However, just as you are not obligated to join that sorority, that sorority is not obligated to extend you an invitation for membership. Furthermore, you should not worry if you are not a legacy or do not know anyone in a sorority. The entire point of going through Recruitment is to meet new people, and every sorority wants to give all Potential New Members an equal chance. It is most important to be yourself. Every sorority is looking for a variety of members. Not everyone can or wants to be Chapter President, and the sororities realize this. Keep in mind that it is up to you to present yourself to each sorority. Smile and feel free to talk and ask questions.

Remember that membership selection is not an easy task, and it varies from sorority to sorority. These differences are based on national policies and chapter bylaws. Therefore, Panhellenic has no input in the membership selection process or the qualifications each sorority considers for members. Sororities strive to put together a well-rounded and balanced group of new members. There is no mold or "perfect" member. Every house wants to add diversity with each group of new members. No sorority wants to be a house of clones. It is important to be yourself and let your personality shine.

HELPFUL HINTS

I am a legacy to a sorority - what should I know?

Each Potential New Member is considered on an individual basis; a legacy is no more obligated to join a particular sorority than the sorority is obligated to pledge her. The Potential New Member and the sorority should be looking for compatibility, not necessarily a family connection to the group. Panhellenic has no policies regarding legacies because each sorority has its own policy, and Panhellenic has no input in individual sorority membership decisions. More specific questions regarding legacies should be directed to the individual sororities.

What if I turn down a bid I receive?

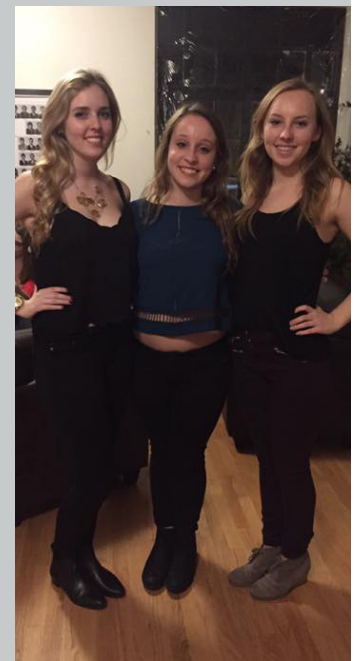
After the Preferential Round if you wish to join a sorority, you will fill out and sign an official Membership Recruitment Acceptance Binding Agreement. Your signature on this card is binding for one year. If you then receive a bid and decide not to accept it, you will not be able to participate in Recruitment or Continuous Open Bidding for one year. We therefore urge you to think carefully before turning down a bid as emotions can temporarily cloud your thinking. Please give yourself and the sorority a chance before declining a bid.

What if I have a hard time making decisions about sororities?

Difficult decisions are a very common dilemma. Potential New Members, however, should not look at this as a problem. Most women can be happy in any of the sororities on campus. Besides, you have to keep in mind that sororities are also having to make decisions. Think carefully and look objectively at what each sorority has to offer you. A sorority should be a home away from home; a place where you feel totally comfortable and welcome. Your experiences at each Recruitment event and personal goals and desires should guide your decision making.

How do the sororities decide who to invite back for each round?

As your Recruitment schedule is reduced from round to round, so is the number of women each sorority is allowed to invite back. Every Potential New Member has something to offer a sorority, but sororities are required to release some Potential New Members. In deciding which Potential New Members to invite back and which to release, each chapter has a democratic voting process. In other words, one or a few sorority women cannot guarantee that a Potential New Member will receive an invitation to the next round. Also, sororities are not required to pledge their legacies. Most importantly, a sorority woman should never imply or promise a Potential New Member that she will be returning to any subsequent round.



Meet Our Chapters

Alpha Gamma Delta

Number of Years on Campus: 36 years
House Location: 1661 Tibbits Avenue
Philanthropy: Alpha Gamma Delta Foundation - Diabetes Research
Philanthropy Event House Most Proud of: Dodging Diabetes
Colors: Red, Buff (Yellow) & Green
Flower: Red and Yellow Roses with Green Ferns
Gem: Pearl
Animal: Squirrel

Alpha Omega Epsilon

Number of Years on Campus: 10 years
House Location: Colvin 12-13 in RAHPs A
Philanthropy: Dress for Success
Philanthropy Event House Most Proud of: Rensselaer's Got Talent
Colors: Royal Blue, Silver & White
Flower: White Rose
Gem: Sapphires & Pearls
Animal: Dolphin

Alpha Phi

Number of Years on Campus: 21 years
House Location: McGiffert House - Stackwyck
Philanthropy: Alpha Phi Foundation - Women's Leadership and Cardiac Care
Philanthropy Event House Most Proud of: Red Dress Gala
Colors: Silver & Bordeaux (Maroon)
Flower: Lily of the Valley & Forget-Me-Nots
Animal: Phi Bear

Pi Beta Phi

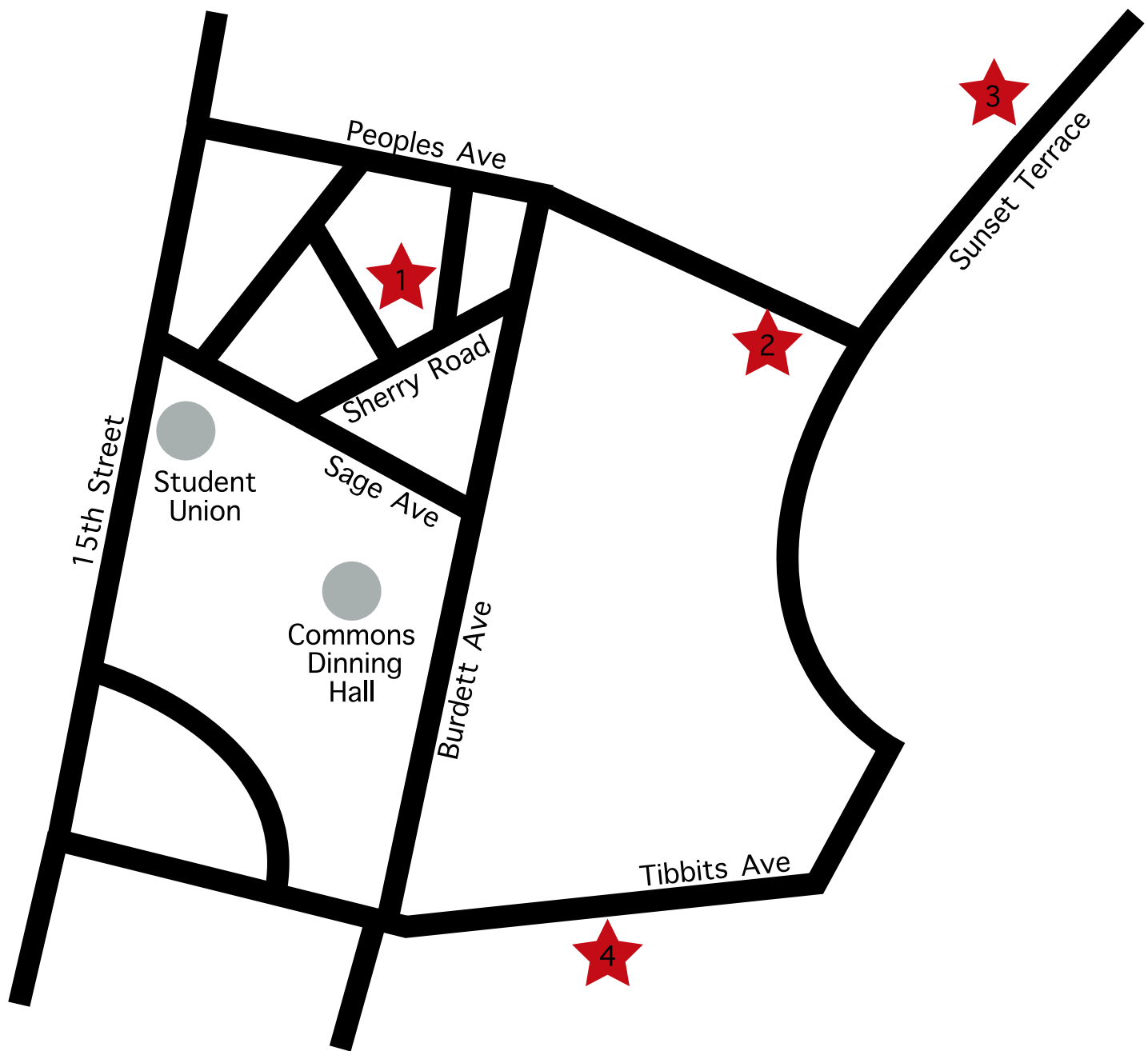
Number of Years on Campus: 34 years
House Location: 8 Sherry Road
Philanthropy: Read>Lead>Achieve, Promotion of Literacy
Philanthropy Event House Most Proud of: Mr. RPI
Colors: Wine & Silver Blue
Flower: Wine Carnation
Animal: Angel

Sigma Delta

Number of Years on Campus: 20 years
House Location: No current house, though sisters live together
Philanthropy: Changes based on sister's passions (examples: The Polaris Proj. & Invisible Girl Proj.)
Philanthropy Event House Most Proud of: Nuestra Belleza (multicultural pageant)
Colors: Forest Green, Burgundy, Cream
Flower: Iris
Animal: Butterfly







- ★ 1 ΠΒΦ | 8 Sherry Road
- ★ 2 ΑΩΕ | 13 Colvin Drive
- ★ 3 ΑΦ | McGiffert House Stackwyck
- ★ 4 ΑΓΔ | 1661 Tibbits Ave
- ★ 5 ΣΔ | No official house